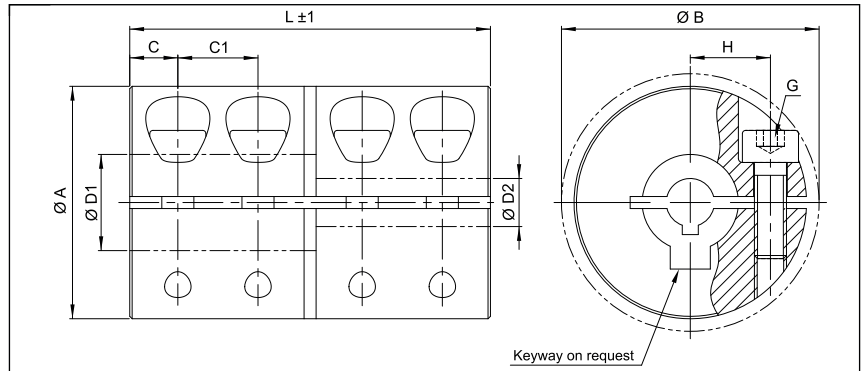


Rigid Shaft Coupling  
single slit

# KBST2



Order Code for Standard Coupling

**KBST2 - 50**

This coupling will automatically be supplied with unique bore 50H7.

Type Size

Order Code for Coupling with different Bore Diameters

**KBST2 - 50 - 45 - 48**

This coupling will be supplied with the dimensions of type KBST2-50 but with a bore combination 45H7 - 48H7.

Type Size D1 D2

Rigid shaft coupling - Steel blackened												
Size	Torque Steel Nm	Dimensions								Screw (ISO4762)	Tightening Torque Screws Nm	Mass g
		Standard Bore Ø D1 H7	different Bores Ø D1 / D2 H7 min~max	A mm	B mm	L mm	C1	C2	H			
6	30	6	5-7	18	21.2	30	4	7	5.5	M3x8	2	47
8	50	8	5-12	24	26.8	35	4.5	8	8.5	M3x10	3	102
10	100	10	5-15	29	32.7	45	6	10	10	M4x12	4.5	185
12	100	12	5-15	29	32.7	45	6	10	10	M4x12	4.5	180
14	190	14	10-17	34	39.1	50	6	12	11.5	M5x16	9	272
15	190	15	10-17	34	39.1	50	6	12	11.5	M5x16	9	266
16	190	16	10-17	34	39.1	50	6	12	11.5	M5x16	9	261
20	350	20	10-24	42	48.2	65	8	16	16	M6x16	15	518
25	390	25	10-26	45	50.8	75	10	17	17.5	M6x16	15	623
30	475	30	20-32	53	58.1	83	10.5	20.5	20.5	M6x18	15	920
35	1100	35	20-40	67	74.1	95	13	22	25	M8x25	40	1880
40	1325	40	30-50	77	83.4	108	15	24	30	M8x25	40	2710
50	2250	50	40-52	85	93.2	124	15	30	33	M10x25	84	3520

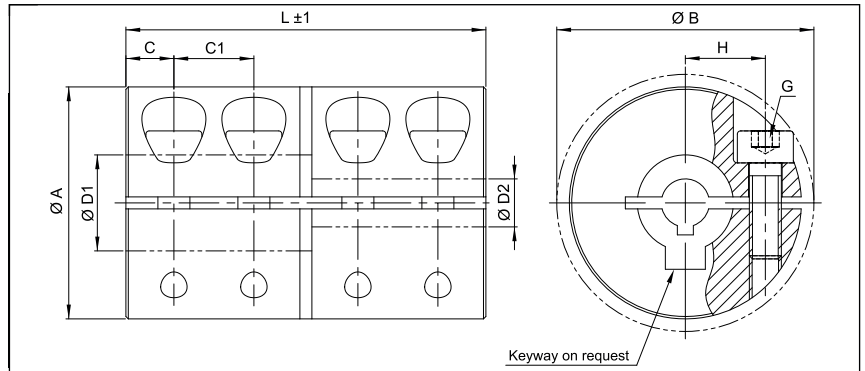
Transmittable torque (Nm) depending on shaft diameter (mm)																							
Size	5	6	8	10	12	14	16	18	20	22	24	26	28	30	32	34	36	38	40	44	46	48	50
6	18	19																					
8	25	26	29	31	33																		
10	51	53	57	61	65	69																	
12	51	53	57	61	65	69																	
14				109	116	122	129																
15				109	116	122	129																
16				109	116	122	129																
20				195	205	214	223	233	242	251	261												
25				209	219	228	237	247	256	265	275	284											
30									284	293	303	312	321	330	340								
35									582	599	616	632	649	666	682	699	716	732	749				
40														749	765	782	799	815	832	865	882	899	915
50																			1400	1453	1479	1506	1532

Keyways

according DIN 6885/1 are only possible in unique bore diameters.

Rigid Shaft Coupling  
single slit

# KBST2



Order Code for Standard Coupling

**KBST2 - 80**

This coupling will automatically be supplied with unique bore 80H7.

Type                      Size

Order Code for Coupling with  
different Bore Diameters

**KBST2 - 80 - 75 - 90**

This coupling will be supplied with the dimensions of type KBST2-80 but with a bore combination 75H7 - 90H7.

Type                      Size                      D1                      D2

Rigid shaft coupling - Steel blackened												
Size	Torque Steel Nm	Dimensions								Screw(ISO4762)	Tightening Torque Screws Nm	Mass g
		Standard Bore Ø D1 H7	different Bores Ø D1 / D2 H7 min~max	Ø A mm	Ø B mm	L mm	C1	C2	H			
55	3000	55	45-58	93	99.5	140	20	29	37	M10x30	84	4240
60	3300	60	50-64	100	105	150	20	34	40	M10x30	84	5100
65	4000	65	60-72	115	120	200	28	43	45	M12x35	144	9350
70	4800	70	65-78	122	125.5	220	30	49	48	M12x40	144	11510
75	5500	75	70-88	133	136	220	32	45	54	M12x40	144	12550
80	6800	80	75-92	138	140	220	32	45	56	M12x45	144	13670
85	7500	85	75-92	148	155	250	35	54	56	M16x45	354	19550
90	8400	90	80-100	157	162	280	40	59	60	M16x50	354	23990
95	10000	95	80-100	167	176	300	40	69	62	M20x55	590	31080
100	12500	100	80-104	173	181	320	45	69	65	M20x55	590	35590

Transmittable torque (Nm) depending on shaft diameter (mm)																					
Size	45	48	50	52	55	58	60	64	65	70	72	75	78	80	85	88	90	95	100	104	
55	1572	1611	1638	1664	1704	1743															
60			1717	1743	1783	1823	1849	1902													
65							2886	2963	2982	3078	3117										
70									3098	3194	3232	3290	3348								
75										3425	3463	3521	3579	3617	3713	3771					
80												3598	3656	3694	3790	3848	3886				
85												6758	6867	6939	7120	7228	7300				
90														7228	7409	7517	7589	7770	7951		
95														9865	10107	10252	10349	10591	10833		
100														10156	10397	10542	10639	10881	11123	11316	

**Keyways**

according DIN 6885/1 are only possible in unique bore diameters.

