

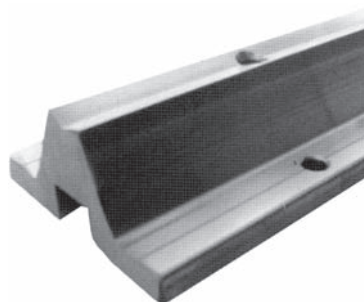
# Podpěry vodících tyčí

Typ FTSN

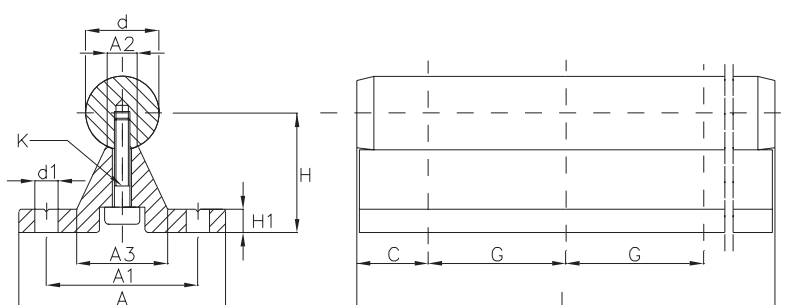


## Popis

- Materiál: slitina hliníku
- Typ FTSN\_\_ [nevrтанé]  
     FTSN\_\_ G [vrтанé]  
     FTSN\_\_ G2 [vrтанé]



Typ FTSN



Obj. číslo	Rozměry			Rozměry pro uchycení							
	d [mm]	A [mm]	H <sub>±0,2</sub> [mm]	A <sub>2</sub> [mm]	A <sub>3</sub> [mm]	H <sub>1</sub> [mm]	A <sub>1</sub> [mm]	d <sub>1</sub> [mm]	C [mm]	G [mm]	K [mm]
FTSN12G	12	40	22	5,4	15	5	29	4,5	37,5	75	M4x20
FTSN12G2	12	40	22	5,4	15	5	29	4,5	60,0	120	M4x20
FTSN12	12	40	22	5,4	15	5					
FTSN16G	16	45	26	7,0	19	5	33	5,5	50,0	100	M5x20
FTSN16G2	16	45	26	7,0	19	5	33	5,5	75,0	150	M5x20
FTSN16	16	45	26	7,0	19	5					
FTSN20G	20	52	32	8,1	23	6	37	6,6	50,0	100	M6x25
FTSN20G2	20	52	32	8,1	23	6	37	6,6	75,0	150	M6x25
FTSN20	20	52	32	8,1	23	6					
FTSN25G	25	57	36	10,3	26	6	42	6,6	60,0	120	M8x30
FTSN25G2	25	57	36	10,3	26	6	42	6,6	100,0	200	M8x30
FTSN25	25	57	36	10,3	26	6					
FTSN30G	30	69	42	11,0	29	7	51	9,0	75,0	150	M10x35
FTSN30G2	30	69	42	11,0	29	7	51	9,0	100,0	200	M10x35
FTSN30	30	69	42	11,0	29	7					
FTSN40G	40	73	50	15,0	36	8	55	9,0	100,0	200	M10x40
FTSN40G2	40	73	50	15,0	36	8	55	9,0	150,0	300	M10x40
FTSN40	40	73	50	15,0	36	8					
FTSN50G	50	84	60	19,0	40	9	63	11,0	100,0	200	M12x45
FTSN50G2	50	84	60	19,0	40	9	63	11,0	150,0	300	M12x45
FTSN50	50	84	60	19,0	40	9					

Standardní délka je 600 mm, jiné délky dle požadavků zákazníka (L<sub>max</sub> - 6000 mm).